

THERMAL PRINTER OPERATION MANUAL



CONTENTS

1. BASIC RULES FOR OPERATING THE PRINTER

2. OUTER VIEW – CONTROL

- 2.1. General description of the Printer
- 2.2. Indicators
- 2.3. Specifications

3. DETAILED DESCRIPTION OF THE SOFTWARE

- 3.1. Install the software
- 3.2. Choose language of software
- 3.3. Set the label size
- 3.4. Working with text
- 3.5. Working with variables and counters
- 3.6. Set barcode
- 3.7. Add Dash
- 3.8. Set a QR code
- 3.9 Set a picture

4. STORAGE OF LABELS

5. THE PRINTER CONNECT TO THE SCALE

- 5.1 Variables of NOVO scale
- 5.2 Operation with scales

PACKING DETAILS:

- **Printer ----- 1 SET**
- **Paper -----1 ROLL**
- **Adapter -----1 PC**
- **Software ----- 1 PC**
- **Manual ----- 1 PC**
- **Cable: printer to computer----- 1 PC**

- **Cable: printer to scale -----1 PC**

1. BASIC RULES FOR OPERATING THE PRINTER

**! FOLLOW INSTRUCTIONS CLOSELY
! MAY CAUSE DAMAGE TO THE UNIT**

- The printer is operated **ONLY** with its own DC adapter.
- When inserting the paper roll be careful not to let any pins, paper clips or other hard objects fall inside the printing mechanism.
- Do not spill liquids of any kind on the device.
- Print only on thermal label paper-rolls.
- Don't force paper out from the printing mechanism.
- Should the printer behave unusually during operation immediately turn it off!
- Printer repairs are performed only by service technicians. Do not attempt to repair the unit yourself.

ATTENTION! *The printer operates with paper rolls with sizes:*

- *roll with labels: width 58-110mm*
- *maximum diameter of roll: 100 mm*

2. OUTER VIEW OF CONTROL

2.1. General description of the printer

The printer is designed to print all sized labels(1-4inch) and large paper storehouse. It is particularly useful when printing information, arranged in a template form, which has to be partially modified under customer demand.

The memory of the printer contains a command file which stores data for the arrangement and design of the separate graphic elements,

easing your work considerably when you have to print a greater number of labels. The built-in 2 matrix fonts with different sizes, as well as the freely selectable option for additional scaling and rotation, gives you greater freedom in designing the inscriptions on your labels. If those fonts do not satisfy your requirements you are free to load additional fonts in the memory of the device.

The device may be used to print information from Windows (Word, Notepad or other programs) after the installation of the necessary driver.

In conclusion, the printer offers fast and flexible printing at a quality which is very similar to that of most contemporary laser printers (printing density - 203 dpi).

2.2. Indicators:

POWER	Lights in green when printer is ON.
ERROR	Normally when printer is ON it is active.
PAPER	ON during normal printer status. Lights in red when paper is over and blinks in red if no label is found.

2.3. Specifications:

Print mode: thermal print.

Speed of print: 70mm/s

Paper size: 58-110mm can be selected

Life of printing head: 50km

Interface: RS-232, USB

Power: 24VDC/2A

Weight of printer: about 1000g (without paper)


Work temp.: 0— 50 °C

Label Editor: design label by yourself

Available scale : weight scales, counting scales, price-computing scales.

3. Detailed description of the SOFTWARE

3.1. Install the software

Press click  **2.NLP Printer editor.exe** to run the software.

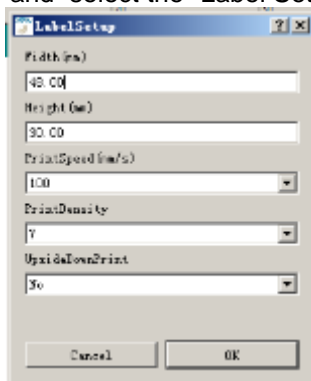
3.2. Choose language of software.



3.3. Set the label size.

Press the “Edit” and select the “Label Setup” on the drop down list, or press

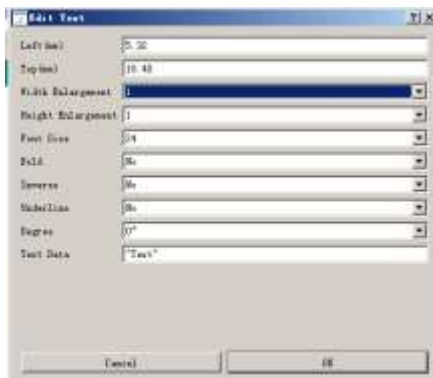
the icon



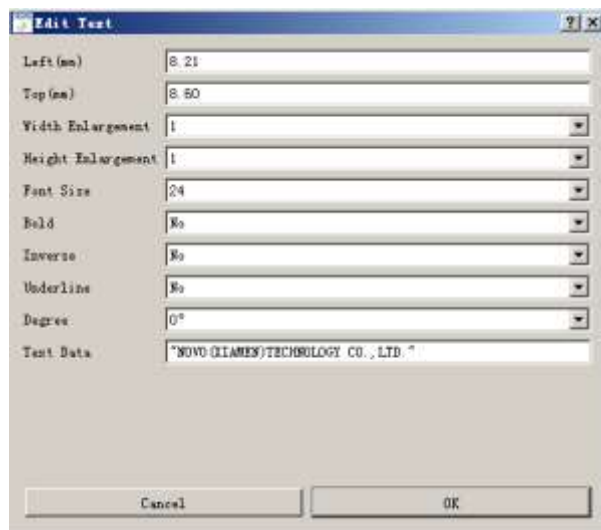
Now can design the width and height of the label.

3.4. Working with text:

Press **A** ,



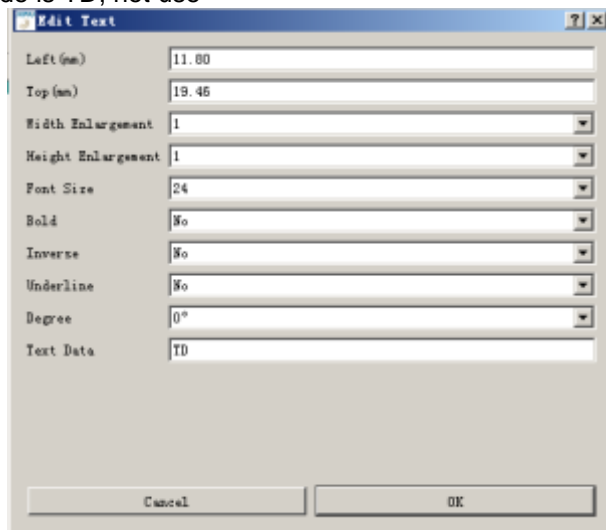
Example:



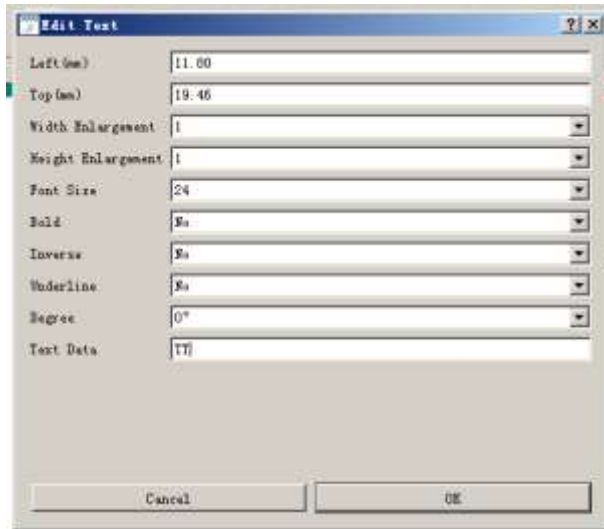
3.4.1. Setting date and time

Press **A** ,

1. Date code is TD, not use "



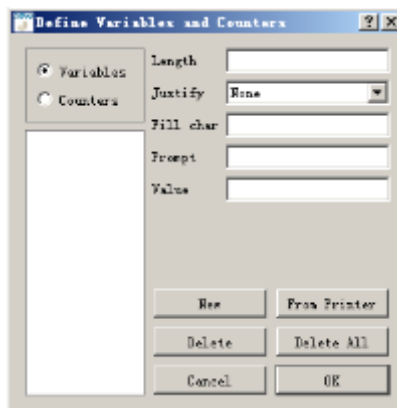
2. Time code is TT



Note: 1) no need “ ”

3.5. Working with variables and counters

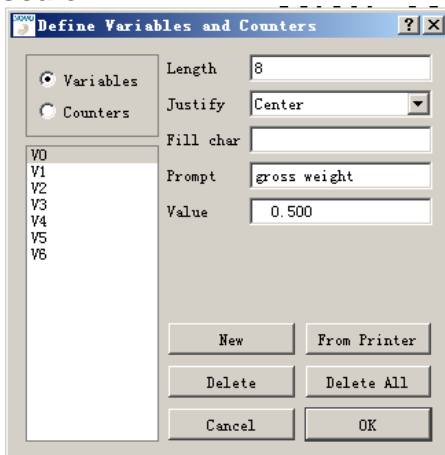
Press 



Press New to set variables :

Hear provide scale's variables:

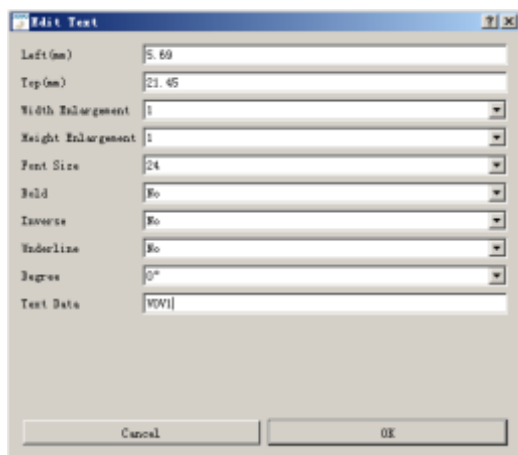
3.5.1 Counting scale:



V0 10 (Gross weight)
 V1 Kg / g (Unit)
 V2 8 (Net weight)
 V3 1.40 (Tare weight)
 V4 0.12345 (piece weight)
 V5 Kg / g (Unit of piece weight)
 V6 9999 (quantity)

Example:

Gross weight is V0, Unit is V1, Press **A**, put into V0V1, no need " "

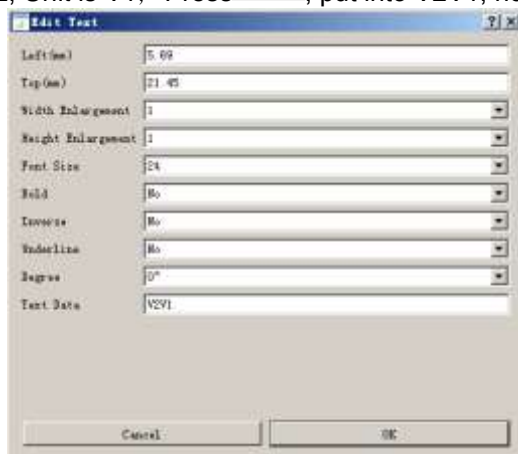


The 'Edit Text' dialog box contains the following fields and values:

Field	Value
Left(mm)	5.69
Top(mm)	21.45
Width Enlargement	1
Height Enlargement	1
Font Size	24
Bold	No
Inverse	No
Underline	No
Degree	0°
Text Data	V0V1

Buttons: Cancel, OK

Net weight is V2, Unit is V1, Press **A**, put into V2V1, no need " "

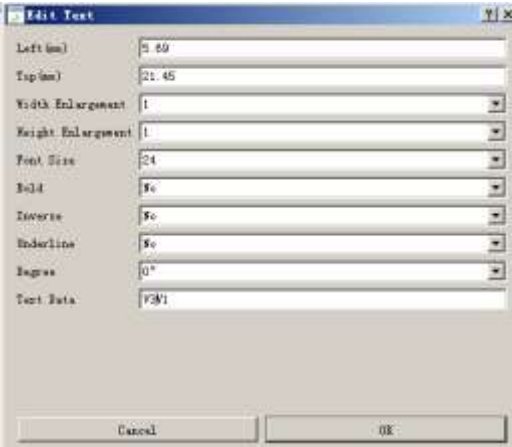


The 'Edit Text' dialog box contains the following fields and values:

Field	Value
Left(mm)	5.69
Top(mm)	21.45
Width Enlargement	1
Height Enlargement	1
Font Size	24
Bold	No
Inverse	No
Underline	No
Degree	0°
Text Data	V2V1

Buttons: Cancel, OK

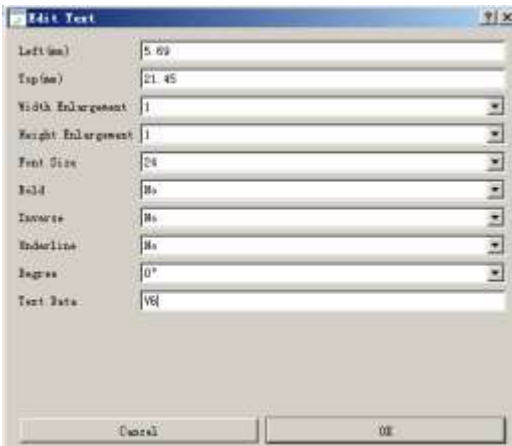
Tare weight is V3, Unit is V1, Press **A**, put into V3V1, no need " "



Left (mm)	5.69
Top (mm)	21.45
Width Enlargement	1
Height Enlargement	1
Font Size	24
Bold	No
Italic	No
Underline	No
Rotate	0°
Text Data	V6M

Cancel OK

Quantity is V6, press , put into V6, no need " "



Left (mm)	5.69
Top (mm)	21.45
Width Enlargement	1
Height Enlargement	1
Font Size	24
Bold	No
Italic	No
Underline	No
Rotate	0°
Text Data	V6

Cancel OK

Now it generate a print formate as below:

NOVO(XIAMEN)TECHNOLOGY CO.,LTD.

NAME: SCREWS 2018-12-25 11:28:38

PIECE WEIGHT: 2.000g

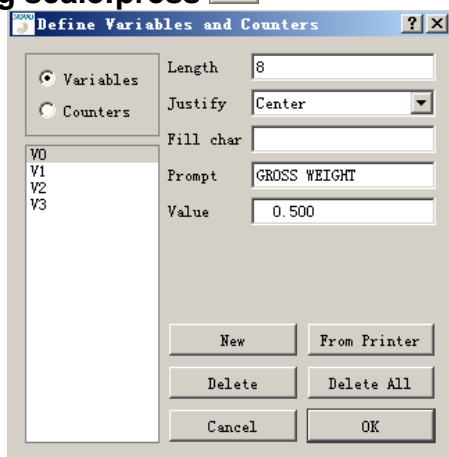
TARE WEIGHT: 1.000kg

NET WEIGHT: 2.000kg

GROSS WEIGHT: 3.000kg

QUANTITY: 1000PCS

3.5.2. Weighing scale:press



V0 10 (Gross weight)

V1 Kg / g (Unit)

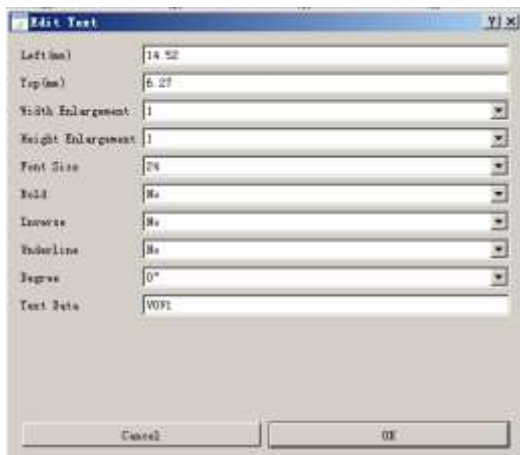
V2 8 (Net weight)

V3 1.40 (Tare weight)

Gross weight is V0, Unit is V1, Press



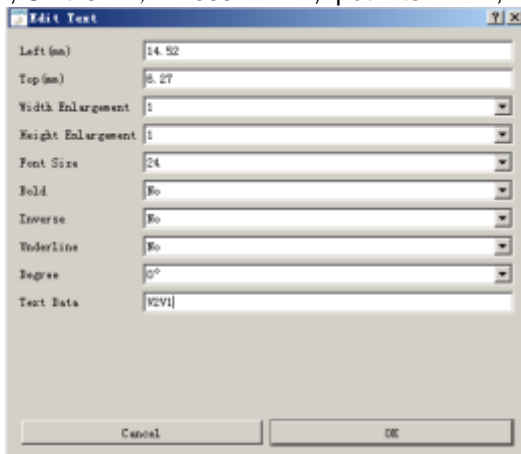
, put into V0V1, not need " "



Left(mm)	14.52
Top(mm)	5.27
Width Enlargement	1
Height Enlargement	1
Font Size	24
Bold	No
Inverse	No
Underline	No
Rotate	0°
Text Data	V0V1

Cancel OK

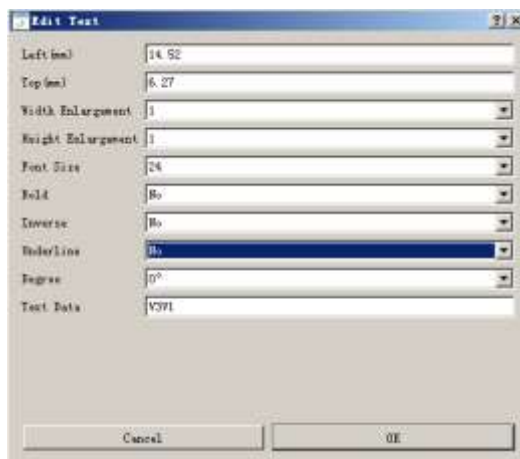
Net weight is V2, Unit is V1, Press **A**, put into V2V1, not need " "



Left(mm)	14.52
Top(mm)	5.27
Width Enlargement	1
Height Enlargement	1
Font Size	24
Bold	No
Inverse	No
Underline	No
Rotate	0°
Text Data	V2V1

Cancel OK

Tare weight is V3, Unit is V1, Press **A**, put into V3V1, not need " "



Now it generate a print formate as below:

NOVO(XIAMEN)TECHNOLOGY CO.,LTD.
2018-12-25 11:36:13

SCALE ID:0001

TARE WEIGHT: 1.000kg

NET WEIGHT: 2.000kg

GROSS WEIGHT: 2.500kg

*V0 is a variable and changes randomly according to the actual weighing of the scale.

*Each parameter setting must refer to the above parameter list.

3.4.3 Defining a counter

Define Variables and Counters ? X

☐ Variables
☒ Counters

CO

Length 8
Justify None
Fill char
Increment 0
Prompt Counter 0
Value

New From Printer
Delete Delete All
Cancel OK

Define Variables and Counters ? X

☐ Variables
☒ Counters

CO

Length 8
Justify None
Fill char
Increment 0
Prompt Counter 0
Value 1

New From Printer
Delete Delete All
Cancel OK

Press

A

Edit Text ? X

Start X(mm) 13.00
Start Y(mm) 10.76
Size X 1
Size Y 1
Font 0 (12x24)
Style Normal
Rotation None
Text Data CO


Cancel OK

Now it generate a print formate as below:

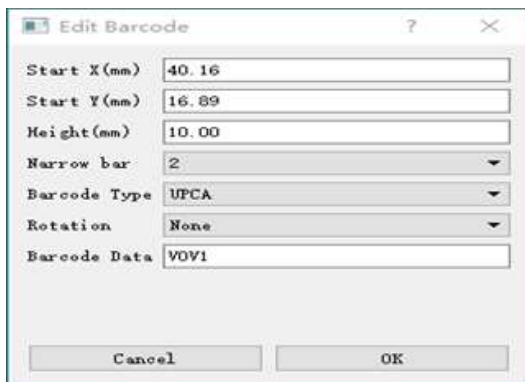
NOVO(XIAMEN)TECHNOLOGY CO.,LTD.
2018-12-25 11:44:36
TARE WEIGHT: 1.000kg
NET WEIGHT: 2.000kg
GROSS WEIGHT: 2.500kg
COUNT:001

3.6. Set Barcode:

The barcode should be set according to the customer's

requirement.press , each customer uses different barcode rules.If a customer wants to CODE128, in same time,the barcode should be changed according to the weight:

e.g.:



Start X(mm)	40.16
Start Y(mm)	16.89
Height(mm)	10.00
Narrow bar	2
Barcode Type	UPCA
Rotation	None
Barcode Data	VOV1

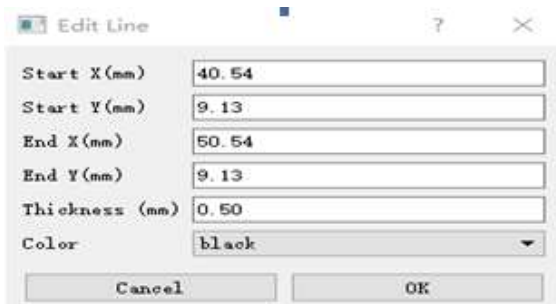
Cancel OK

In the barcode date, you can put into VOV1, then the barcode can be changed as VOV1

NOVO(XIAMEN)TECHNOLOGY CO.,LTD.
2018-12-25 11:44:36
TARE WEIGHT: 1.000kg
NET WEIGHT: 2.000kg
GROSS WEIGHT: 2.500kg
COUNT:001 
2 . 5 0 0 k g

3.7 Add A Dash

press , the line can adjust the length randomly.



The 'Edit Line' dialog box contains the following fields and controls:


Field	Value
Start X(mm)	40.54
Start Y(mm)	9.13
End X(mm)	50.54
End Y(mm)	9.13
Thickness (mm)	0.50
Color	black

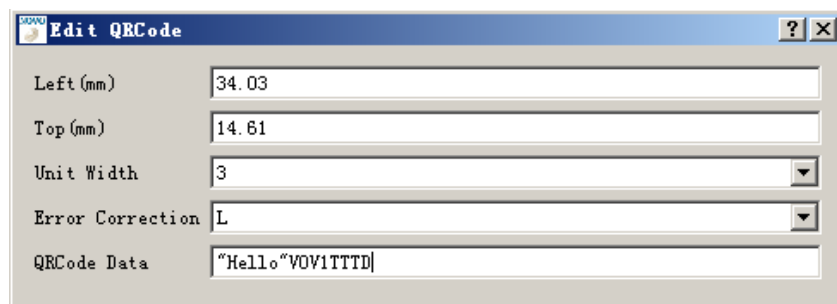
Buttons: Cancel, OK

NOVO(XIAMEN)TECHNOLOGY CO.,LTD.
2018-12-25 11:44:36
TARE WEIGHT: 1.000kg
NET WEIGHT: 2.000kg
GROSS WEIGHT: 2.500kg
COUNT:001 
2 . 5 0 0 k g

3.8 Set a QR code

The QR code shall be set according to the customer's

requirements, press , display the QR code editing dialog box. The size and data of the QR code can be set. The QR code data shall be input.



The image shows a software dialog box titled "Edit QRCode". It contains several input fields for configuring a QR code:

Field	Value
Left (mm)	34.03
Top (mm)	14.61
Unit Width	3
Error Correction	L
QRCode Data	"Hello"VOV1TTTD

NOVO(XIAMEN)TECHNOLOGY CO.,LTD.

2018-12-25 11:44:36

TARE WEIGHT: 1.000kg

NET WEIGHT: 2.000kg

GROSS WEIGHT: 2.500kg

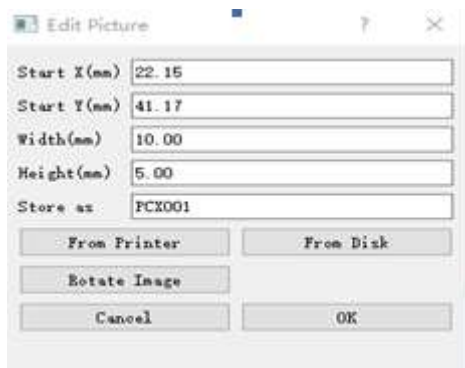
COUNT:001

2 . 5 0 0 k g



3.9 Set a picture

Press , display the edit image dialog box.



You can select the required picture from the computer. If you have saved the picture in the printer, you can also choose from the printer. The picture size can be adjusted and moved freely. The LOGO trademark usually used by the company is mostly processed, as follows:




***Note: the image format must be a monochrome bitmap. Color bitmaps are not supported.**


Now it generate a label as you need. You can test print it.

To see the result of printing, you can choose to try printing, press

the . If the printing is not good, you can adjust it accordingly.

4.Storage of labels

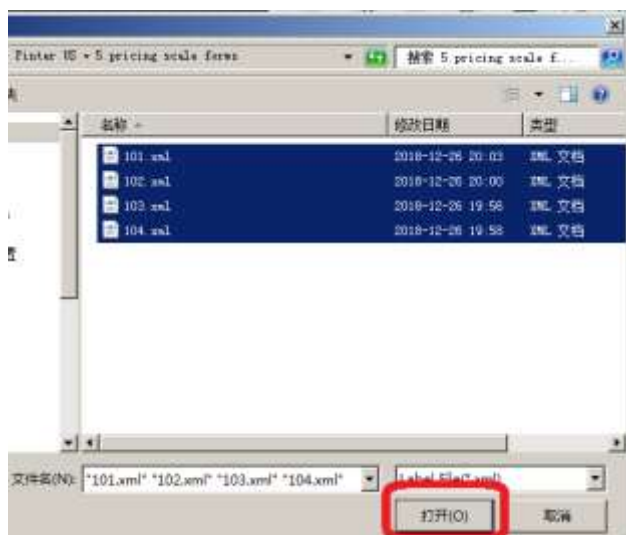
4.1.Save the label to the computer, press the button , you can save the edited label to the computer.

4.2. Save the label to the printer and press the button  to save the edited label to the printer.

4.3. Save many labels into printer.



Click ---- then click store multi label forms into printer.

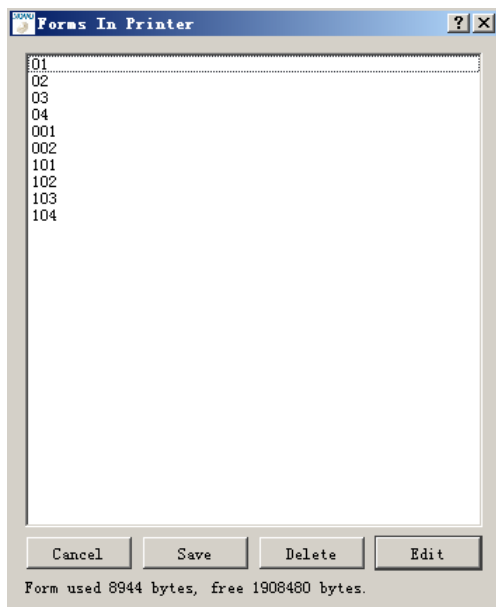


Choose all these files and click open. When hear the bi of the printer. The forms will be stored into printer.

4.4 Check the forms in the printer.



Click ---- then ,click retrieve forms in printer.



It will show all the fomrs in the printer.

5. The printer connect to the scale

5.1 VARIABLES OF NOVO SCALES

COUNTING SCALE

V0 : Gross Weight

V1: Unit

V2: Net Weight

V3: Tare Weight

V4: Piece Weight

V5: Piece unit

V6: Quantity

C0: COUNT

WEIGHING SCALE

V0: Gross Weight

V1: Unit (Kg or Lb)

V2: Net Weight

V3: Tare Weight

C0: COUNT


PRICE COMPUTING SCALE


V0: WEIGHT

V1: Unit Price

V2: Amount

5.2 OPERATION WITH SCALES

5.2.1 AWD, Press the key  and it will show NO 01, use numeric keys to choose correct form no.

5.2.2 ACD, Press the key  and it will show

INPAGE	No 001
	0

Use numeric keys to choose correct form no. Use the key

5.2.3 APD, press the key MR and it will show

INPAGE	E NO
	0

Use numeric keys to choose correct form no. Use the key CG to print.